

Minnesota's Plan to Build Resiliency and Protect the Public from Heat





Overview

Health impacts of climate change

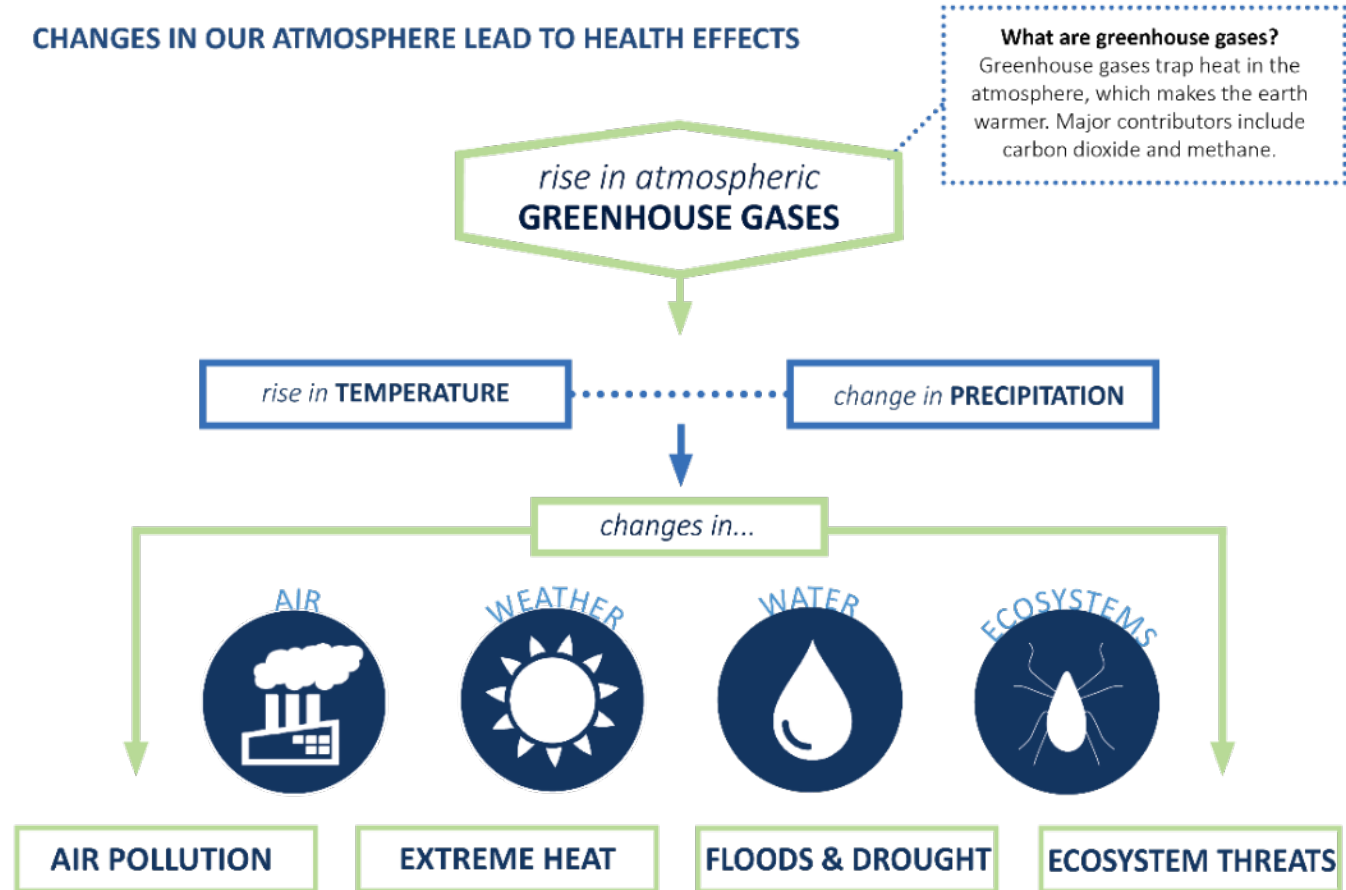
Climate Action Framework

Climate & Health Program

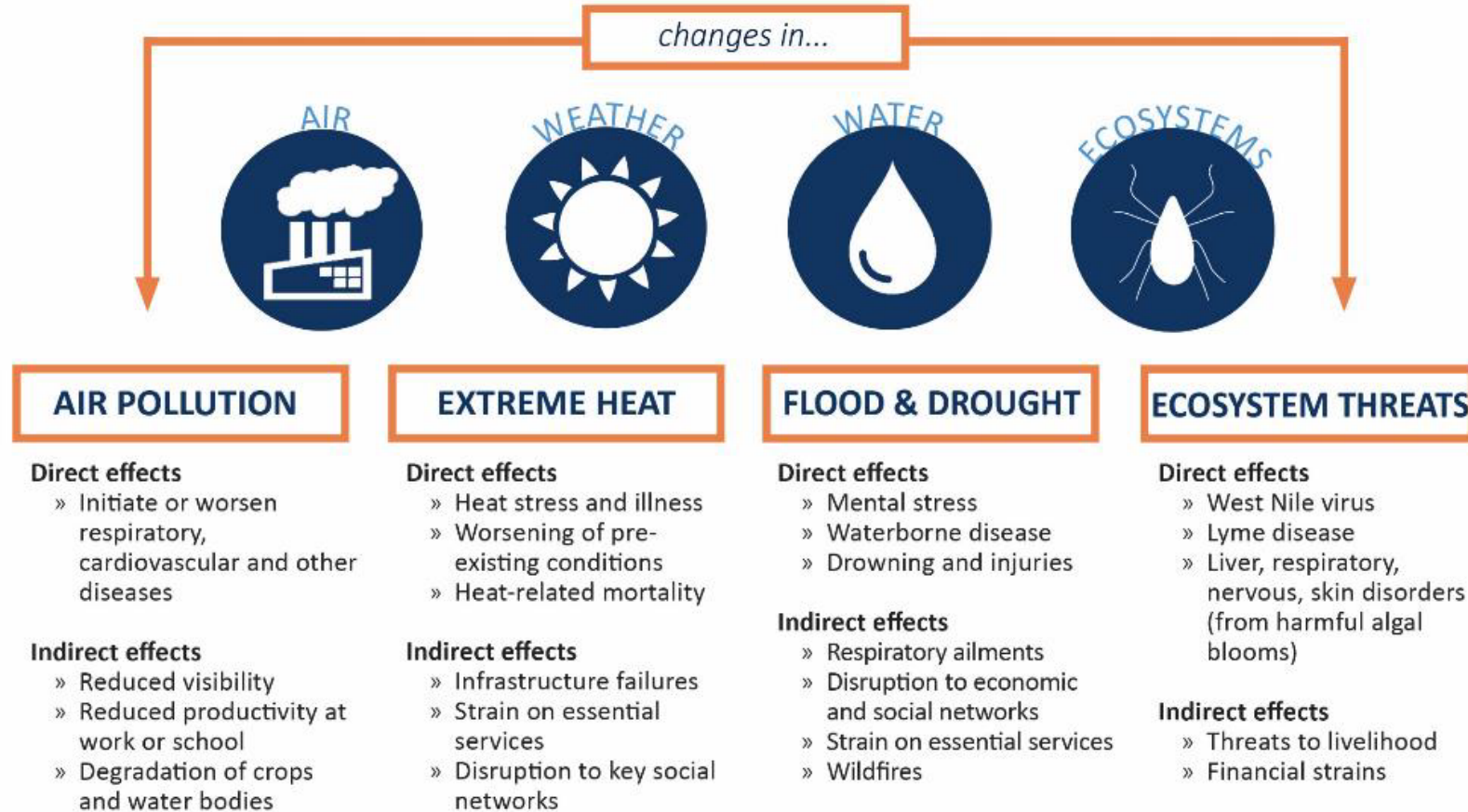
Heat planning

Climate and Health are Linked

CHANGES IN OUR ATMOSPHERE LEAD TO HEALTH EFFECTS



Climate and Health are Linked





Why a Climate Action Framework?

- Create a bold vision for Minnesota
- Invite conversation
- Catalyze action

The climate vision for our state



Carbon-neutral

By 2050, Minnesota substantially reduces greenhouse gas (GHG) emissions and balances any GHG emissions with carbon storage, especially in our landscapes.



Resilient

Minnesota communities, businesses, and the natural environment can prepare, respond to, and recover from the impacts of climate change so all Minnesotans can thrive in the face of these challenges.



Equitable

Minnesotans acknowledge and address inequitable and inaccessible systems that contribute to some communities experiencing disproportionate climate change impacts; ensure fair distribution of the costs and benefits of action now and to future generations; and ensure meaningful participation in planning.

Key messages



Climate change is happening now

We must accelerate action

Climate change affects everyone,
but some are hit harder

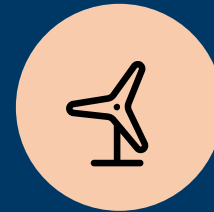
We must work together to meet
global goals

Opportunity to grow our economy
and improve our health, equity,
and the environment

Framework goal areas



Clean
transportation



Clean energy and
efficient buildings



Climate-smart natural
and working lands



Healthy lives and
communities



Resilient
communities



Clean
economy



Clean transportation

The vision:

- Minnesota's transportation system is sustainable, resilient to a changing climate, and supports equitable transportation options for all Minnesotans.
- Air pollution is reduced, especially in communities most affected by it.
- Walking, biking, rolling, and transit options are accessible, safe, and plentiful.

MEASURES OF PROGRESS



Clean transportation



Reduce GHG emissions from the transportation sector 80% by 2040.



Decrease vehicle miles traveled 20% per capita by 2050.



Reach 20% EVs on Minnesota roads by 2030.

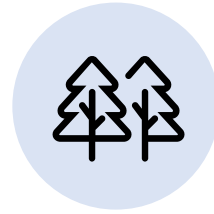
Climate-smart natural and working lands

The vision:

- Absorb and store more carbon, produce food and other products
- Sustain local economies, enhance climate resiliency
- Improve the quality of life for all Minnesotans



MEASURES OF PROGRESS



Climate-smart natural and working lands



By 2035, increase by 25% the amount of carbon sequestered and stored annually in natural and working lands, compared to 2014-2018 average levels.



By 2035, reduce annual GHG emissions in the working lands sector by 25% from 2018 levels.



By 2030, all state-funded or sponsored land, water, and species management plans identify actions to increase adaptation.

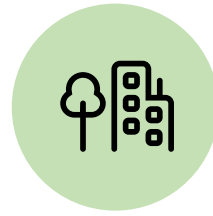
Resilient communities

The vision:

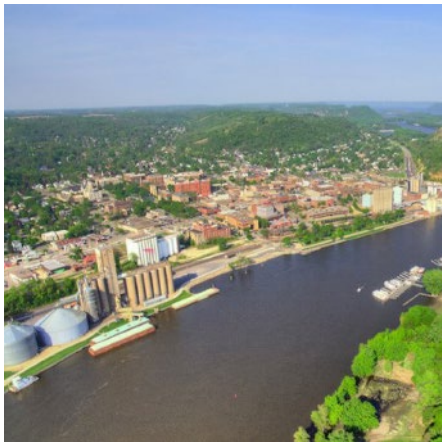
- Communities across Minnesota have the resources and support to plan for and implement projects to build a more resilient future for themselves. Air pollution is reduced, especially in communities most affected by it.
- Physical infrastructure, natural systems, and communities are more prepared for climate impacts and can recover from extreme events.



MEASURES OF PROGRESS



Resilient communities



By 2030, 100% of Minnesotans live in communities with plans that identify climate risks and actions to build resiliency.



By 2026, at least 25 adaptation projects that increase community resiliency are fully funded.



Achieve 30% overall tree canopy cover in Minnesota communities by 2030 and 40% by 2050.

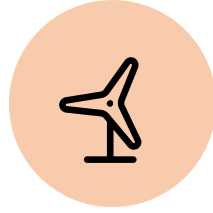


Clean energy and efficient buildings

The vision:

- Minnesotans have reliable, clean, and lower-cost energy through equitable investments in energy efficiency, clean energy, and low-carbon technology.
- The transition creates more jobs and more comfortable homes and businesses.

MEASURES OF PROGRESS



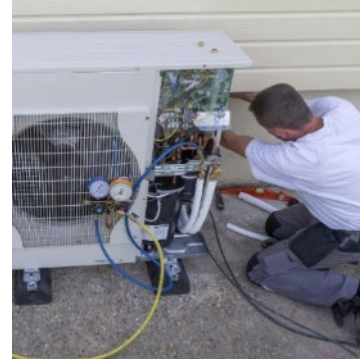
Clean energy and efficient buildings



By 2040, all of Minnesota's electricity is carbon-free.



By 2030, weatherize a quarter of dwellings where occupants earn 50% or less of the state median income.



By 2035, reduce GHG emissions from existing buildings by 50% compared to 2005 levels.



By 2030, reduce thermal GHG emissions by at least 20%, compared to 2005 levels.

Healthy lives and communities

The vision:

Minnesotans are healthy, safe, and resilient in the face of climate change, especially those that live in the communities that are most impacted.



MEASURES OF PROGRESS



Healthy lives and communities



By 2030, reduce the age-adjusted rate of heat-related ER visits to 10 per 100,000.



By 2025, ensure at least 40% of the benefits of certain state and federal climate investments are in disadvantaged communities.



Increase the diversity of state agencies' leadership to reflect the state's changing demographics.



Goal 5: Priority actions

Prepare for diseases. Build the capacity of public health agencies and communities to prepare for and respond to new and current diseases that are increasing due to climate change

Assess healthcare resilience. Ensure hospitals and other facilities can withstand extreme weather and other hazards

Clean economy

The vision:

- Minnesota has a strong economy, aided by public and private investments in emerging research, technology, and businesses.
- Tens of thousands of people are employed in mitigating and adapting to climate change.
- Minnesota companies sell sustainable products made with green processes.
- Labor, businesses, and educational institutions collaborate to support skills training for in-demand jobs.



MEASURES OF PROGRESS



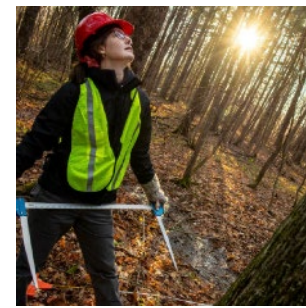
Clean economy



In 2023, create a clean economy workforce and economic development plan with trackable metrics.



Increase the number of apprentices in the construction trades' apprenticeship programs and the % of people of color and women who enroll in and complete the programs.



Increase jobs in all sectors of the clean economy, including new and emerging sectors such as land management, transportation, long-lived wood products, etc.



Increase the number of clean technology businesses and the number of jobs they provide.

What's next

- Implementation
- Measuring and reporting progress
- Refining the Framework





2023 Legislative Wins

- 40+ climate initiatives passed
- Largest investment in climate action to date
- 100% carbon-free by 2040
- \$100 million for climate-smart infrastructure



Climate & Health



Agriculture & Food Security



Air Quality



Extreme Heat



Water Quality



Well-being



Vector-borne Disease



Rates of Heat-Related Illness Emergency Department (ED) Visits

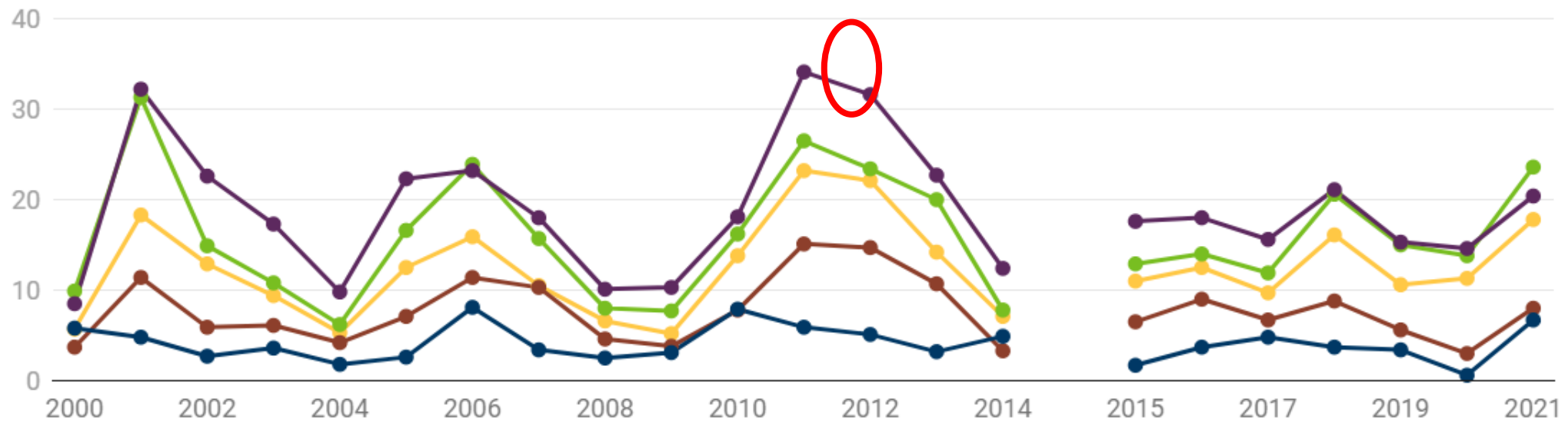
https://data.web.health.state.mn.us/heat_ed

Heat-related illness ED visits in Minnesota, by age

Age-adjusted rate per 100,000

Roll over points for more information

— 0-4 years — 5-14 years — 15-34 years — 35-64 years — 65+ years



Source: Minnesota Hospital Association. The break indicates a change in International Classification of Disease (ICD) coding from ICD-9 to ICD-10 on October 1st, 2015. Rates from 2000-2014 should not be compared to rates from 2015 onward.





Planning for heat

- Syndromic Surveillance System
- Extreme Heat Toolkit update
- Extreme Heat Communications Plan
- Advancing the Minnesota Climate Action Framework
- More resources online, including the Heat-Related Illness Data Portal

mn.gov/framework

www.health.mn.gov/heatplanning





Thank You

Kaija Benson | Minnesota Climate & Health Program
kaija.benson@state.mn.us